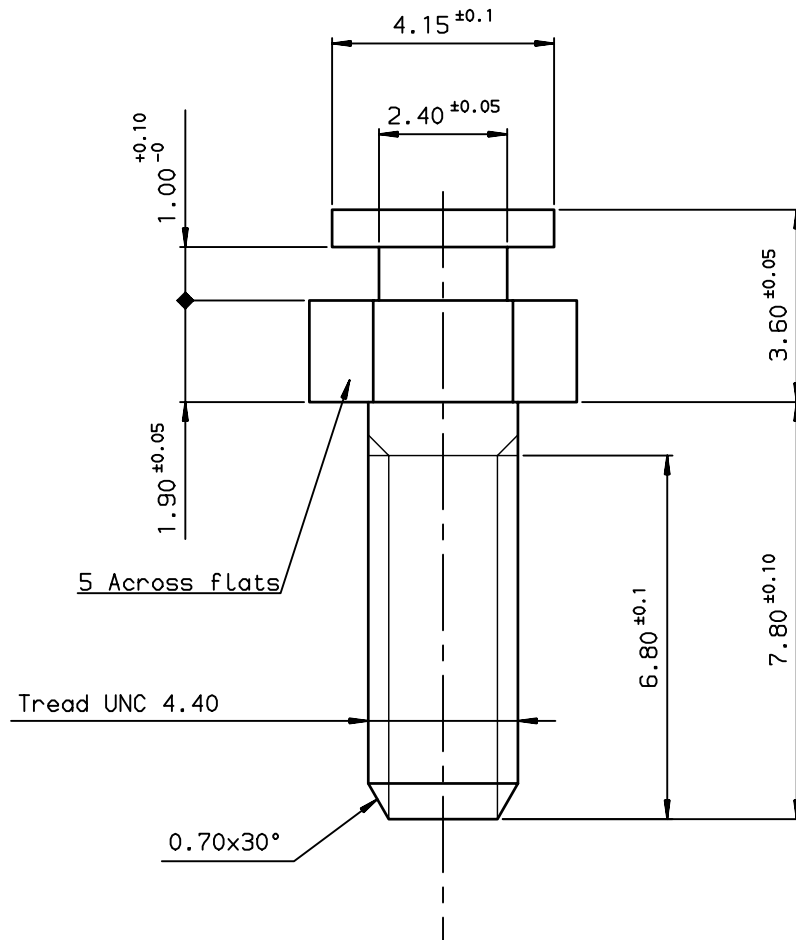


NOTES

Material: Steel, bright tin plated



Part number: 86551247SQ

Part number: 86551247SQLF

NOTE: RoHS INFORMATIONS

- The "LF" products meet European union Directives and other country regulations as described in GS-22-008.
- Plating Sn (pure bright) over copper
- Packaging spec: see GS-14-920

European Views

www.fciconnect.com		surface ISO 1302 ✓	tolerance std ISO 406 ISO 1101	projection mm	size A3	Scale 10
TOLERANCES UNLESS OTHERWISE SPECIFIED						
Dr	JOUBERT	1993/07/19	ANGULAR	0.X	±0.1	size
Eng	PESSON	1993/07/19	LINEAR	0.XX	±0.1	ECN
Chr	LEGARE	1993/07/19	0.XX' ±2'	0.XXX	±0.1	LS06-0097
Appr	LEGARE	1993/07/19	Product family	D-SUB	Spec ref	-
FCJ		MALE SCREW FOR SLIDING LOCKS			dwg no	Rev.
-		-			C-8655-0639	C
catalog no		-			CUSTOMER	sheet 1 of 1

rev	ecn no	dr	date
A	-	MAS	1993/07/19
B	LS05-0026	MPE	2005/07/08
C	LS06-0097	LGO	2006/07/25
-	-	-	-
-	-	-	-
-	-	-	-



Copyright FCJ.